

#### LEGEND

- BOUNDARY
- EXISTING SPOT LEVELS
- PROPOSED SPOT LEVELS
- (FPL: FINISHED PAVEMENT
- TW: TOP OF WALL)
- EXISTING TREES TO BE REMOVED
- TREE ID # AS PER ARBORIST REPORT
- EXISTING TREES TO BE RETAINED & PROTECTED
- TREE ID # AS PER ARBORIST REPORT
- DASH INDICATES TREE PROTECTION ZONE

#### KEY

- PUBLIC FOOTPATH TO REMAIN
- DRIVEWAY
- PEDESTRIAN FOOTPATH & STEPPING STONES
- SELECT CONCRETE UNIT PAVES
- SINGLE BRICK RETAINING OR SCREEN WALL
- BRICK TO MATCH BUILDING FACADE
- DOUBLE BRICK RETAINING OR SCREEN WALL
- BRICK TO MATCH BUILDING FACADE
- WALL TOP BATTEN OR STEEL ROD SCREEN
- DEEP SOIL PLANTING
- GROUNDCOVERS, GRASSES, SHRUBS, TREES
- APARTMENT DEEP SOIL GARDEN BED
- GROUNDCOVERS, GRASSES, SHRUBS
- TURF VERGE & NATURE STRIP
- SUB STATION
- INTEGRATED BRICK SEATING BENCH
- BRICK TO MATCH BUILDING FACADE
- MOON GATE IN BRICK WALL
- BRICK TO MATCH BUILDING FACADE
- SECURITY FENCE WITH GATE FOR SERVICE ACCESS
- BRICK PAVING
- BRICK TO MATCH BUILDING FACADE
- HONED INSITU CONCRETE PAVING
- BRICK STEPS
- BRICK TO MATCH BUILDING FACADE
- STABILISED & COMPACTED CRUSHED GRAVEL
- BIKE HOOPS
- HYDRANT BOOSTER
- LOCATION INDICATIVE
- RAINWATER TANK (UNDER)
- SW DETENTION TANK (UNDER)
- TREE BAY - MULCH WITH TIMBER
- EDGE SURROUND

SECTION 1

SECTION 2

LANDSCAPE ARCHITECT

**SPROUT**  
STUDIO

26D MADDISON STREET  
REDFERN NSW  
T 02 9341 0040  
W sproutstudio.com.au

IN COLLABORATION WITH

MCGREGOR WESTLAKE ARCHITECTURE

CLIENT

LAHC NSW

#### NOTES

- Do not scale from drawings. Verify all dimensions and levels on site.
- All levels shown are in metres Australian Height Datum and dimensions in millimetres unless otherwise specified.
- This drawing should be read in conjunction with the project specification and details. Should a conflict exist advice and direction should be sought from the superintendent.
- The copyright subsisting in these drawings lies with Sprout. They must not be used, copied or reproduced without the prior written consent of Sprout.

drawing references

consultant

Discipline and company name

issue date

Date received

drawing title

Drawing No. or File Name

revision

issue

F

date

2/11/21

revision

REV FOR DA

project

14-16 PATRICIA STREET, MAYS HILL

drawing

CONCEPT

project no.

2109

date

2/11/21

scale

1:100 @ A1

drawn

CW

dwg no.

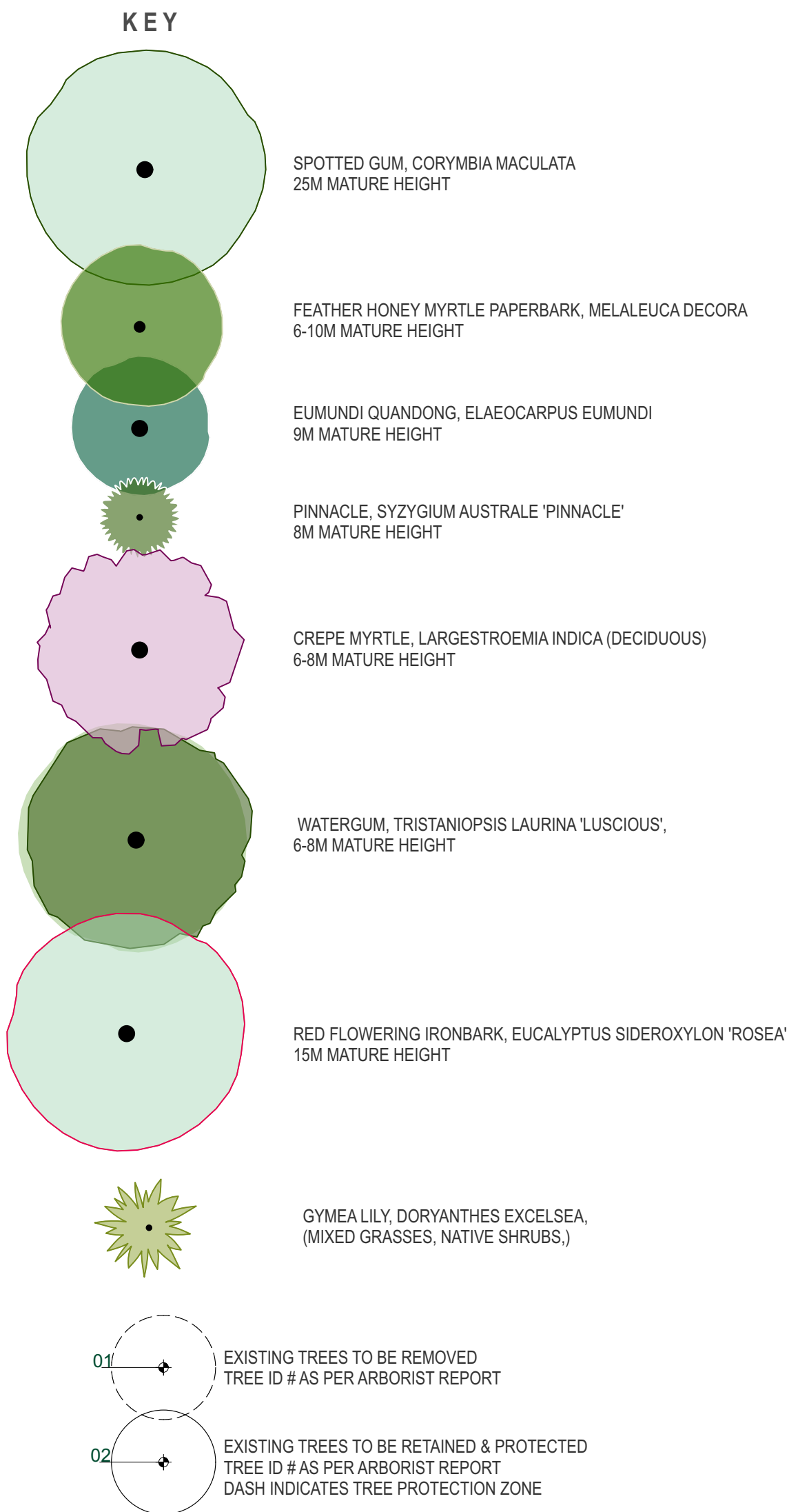
DA 01

rev

F

5M





PLANT SCHEDULE

FORBS & GROUNDCOVERS

Latin Name	Common Name	Spread	Height	Scheduled Size
<i>Carpobrotus glaucescens</i>	Pigface	400	100	150mm
<i>Hardenbergia violacea</i>	Native Sarsaparilla	600	550	150mm
<i>Hibbertia scandens</i>	Golden Guinea Flower	1000	500	150mm
<i>Plectranthus ciliatus</i>	African Spur Flower	600	500	200mm
<i>Viola hederaceae</i>	Native Violet	400	100	150mm
<i>Wahlenbergia gracilis</i>	Sprawling Bluebell	500	200	150mm

GRASSES, SEDGES & RUSHES

Latin Name	Common Name	Spread	Height	Scheduled Size
<i>Dianella caerulea</i> 'Breeze'	Dianella 'Breeze'	600	550	150mm
<i>Liriope 'Just Right'</i>	Just Right	500	500	150mm
<i>Lomandra 'Tanika'</i>	Tanika	600	600	150mm
<i>Neomarica gracilis</i>	Walking Iris	600	500	200mm

FERNS

Latin Name	Common Name	Spread	Height	Scheduled Size
<i>Blechnum nudum</i>	Blechnum	600	500	200mm

SHRUBS

Latin Name	Common Name	Spread	Height	Scheduled Size
<i>Aspidistra elatior</i>	Cast Iron Plant	500	500	150mm
<i>Cordylina glauca</i>	Cordylina Glauca	800	500	200mm
<i>Correa reflexa</i>	Native Fuchsia	900	900	200mm
<i>Doryanthes excelsa</i>	Gynea Lily	2000	2000	15L
<i>Westringia fruticosa</i> 'Mundi'	Westringia Mundi	1500	400	200mm

TREES

Latin Name	Common Name	Spread	Height	Scheduled Size
<i>Elaeocarpus eumundi</i>	Elaeocarpus	2500	9000	75L
<i>Eucalyptus maculata</i>	Spotted Gum	6000	9000	75L
<i>Eucalyptus sideroxylon</i>	Red Ironbark	4500	9000	75L
<i>Melaleuca decora</i>	Paperbark	3000	4000	75L
<i>Syzygium australe</i> 'Pinnacle'	Pinnacle Lilly Pilly	1500	5000	100L

NOTES

- Do not scale from drawings. Verify all dimensions and levels on site.
- All levels shown are in metres Australian Height Datum and dimensions in millimetres unless otherwise specified.
- This drawing should be read in conjunction with the project specification and details. Should a conflict exist advice and direction should be sought from the superintendent.
- The copyright subsisting in these drawings lies with Sprout. They must not be used, copied or reproduced without the prior written consent of Sprout.

drawing references  
consultant  
Discipline and company name

issue date  
Date received  
drawing title  
Drawing No. or File Name

revision  
issue  
G  
date  
2/11/21  
revision  
REV FOR DA

project  
14-16 PATRICIA STREET, MAYS HILL  
drawing  
PLANTING PLAN

project no.  
2109  
date  
2/11/21  
scale  
1:100 @ A1  
drawn  
CW

dwg no.  
DA 02  
rev  
G

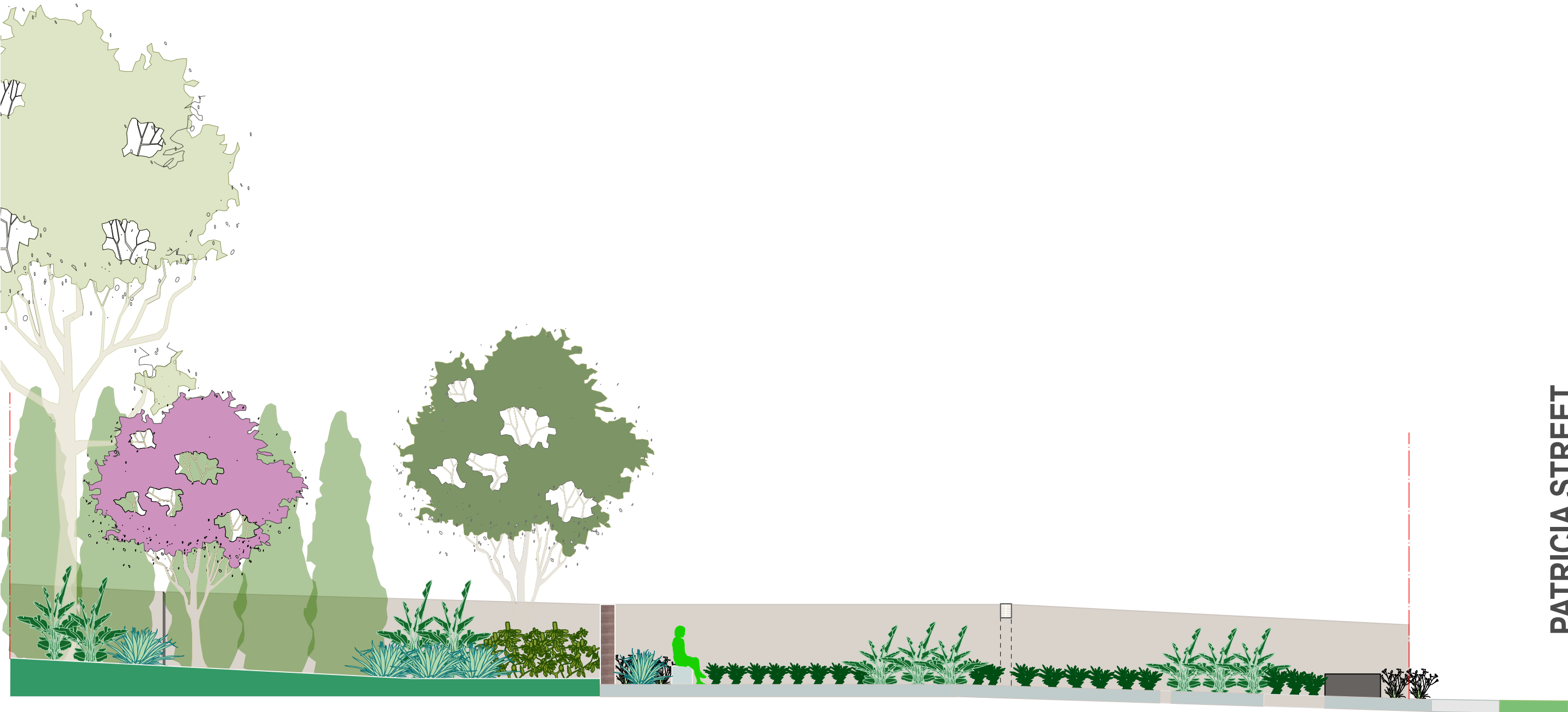




ELEVATION 2



ELEVATION 1



ELEVATION 3



# 14-16 PATRICIA STREET MAYS HILL

## LANDSCAPE CONCEPT DESIGN REPORT

Prepared in collaboration with McGregor Westlake Architecture  
02.11.2021 Version E

SPROUT  
STUDIO



CONTENTS	
LANDSCAPE SITE PLAN	3
PLANTING PLAN	4
ELEVATIONS	5
MATERIALS	6
PLANTING	7

Prepared by Sprout Studio in collaboration with McGregor Westlake Architecture for LAHC

Sprout Landscape Architecture Pty Ltd T/A Sprout Studio  
26D Maddison Street  
Redfern NSW 2016

02 9341 0040  
sproutstudio.com.au







- LEGEND**
- BOUNDARY
  - EXISTING SPOT LEVELS
  - PROPOSED SPOT LEVELS
  - (FPL: FINISHED PAVEMENT  
TW: TOP OF WALL)
  - EXISTING TREES TO BE REMOVED  
TREE ID # AS PER ARBORIST REPORT
  - EXISTING TREES TO BE RETAINED & PROTECTED  
TREE ID # AS PER ARBORIST REPORT  
DASH INDICATES TREE PROTECTION ZONE

- KEY**
- PUBLIC FOOTPATH TO REMAIN
  - DRIVEWAY
  - PEDESTRIAN FOOTPATH & STEPPING STONES  
SELECT CONCRETE UNIT PAVES
  - SINGLE BRICK RETAINING OR SCREEN WALL  
BRICK TO MATCH BUILDING FACADE
  - DOUBLE BRICK RETAINING OR SCREEN WALL  
BRICK TO MATCH BUILDING FACADE
  - WALL TOP BATTEN OR STEEL ROD SCREEN
  - DEEP SOIL PLANTING  
GROUNDCOVERS, GRASSES, SHRUBS, TREES
  - APARTMENT DEEP SOIL GARDEN BED  
GROUNDCOVERS, GRASSES, SHRUBS
  - TURF VERGE & NATURE STRIP
  - SUB STATION
  - INTEGRATED BRICK SEATING BENCH  
BRICK TO MATCH BUILDING FACADE
  - MOON GATE IN BRICK WALL  
BRICK TO MATCH BUILDING FACADE
  - SECURITY FENCE WITH GATE FOR  
SERVICE ACCESS
  - BRICK PAVING  
BRICK TO MATCH BUILDING FACADE
  - HONED INSITU CONCRETE PAVING
  - BRICK STEPS  
BRICK TO MATCH BUILDING FACADE
  - STABILISED & COMPACTED CRUSHED  
GRAVEL
  - BIKE HOOPS
  - HYDRANT BOOSTER  
LOCATION INDICATIVE
  - RAINWATER TANK (UNDER)
  - SW DETENTION TANK (UNDER)
  - TREE BAY - MULCH WITH TIMBER  
EDGE SURROUND

SECTION 1

SECTION 2

LANDSCAPE SITE PLAN

LANDSCAPE ARCHITECT

**SPROUT  
STUDIO**

26D MADDISON STREET  
REDFERN NSW  
T 02 9341 0040  
W sproutstudio.com.au

IN COLLABORATION WITH

**MCGREGOR WESTLAKE ARCHITECTURE**

CLIENT

**LAHC NSW**

**NOTES**

- Do not scale from drawings. Verify all dimensions and levels on site.
- All levels shown are in metres Australian Height Datum and dimensions in millimetres unless otherwise specified.
- This drawing should be read in conjunction with the project specification and details. Should a conflict exist advice and direction should be sought from the superintendent.
- The copyright subsisting in these drawings lies with Sprout. They must not be used, copied or reproduced without the prior written consent of Sprout.

drawing references

consultant  
Discipline and company name

issue date  
Date received

drawing title  
Drawing No. or File Name

revision

Issue  
F

date  
2/11/21

revision  
REV FOR DA

project

**14-16 PATRICIA STREET, MAYS HILL**

drawing

**CONCEPT**

project no.

2109

date

2/11/21

scale

1:100 @ A1

drawn

CW

dwg no.

**DA 01**

rev

**F**

0 5 M





KEY

SPOTTED GUM, CORYMBIA MACULATA  
25M MATURE HEIGHT

FEATHER HONEY MYRTLE PAPERBARK, MELALEUCA DECORA  
6-10M MATURE HEIGHT

EUMUNDI QUANDONG, ELAEOCARPUS EUMUNDI  
9M MATURE HEIGHT

PINNACLE, SYZYGIIUM AUSTRALE 'PINNACLE'  
8M MATURE HEIGHT

CREPE MYRTLE, LARGESTROEMIA INDICA (DECIDUOUS)  
6-8M MATURE HEIGHT

WATERGUM, TRISTANIOPSIS LAURINA 'LUSCIOUS',  
6-8M MATURE HEIGHT

RED FLOWERING IRONBARK, EUCALYPTUS SIDEROXYLON 'ROSEA'  
15M MATURE HEIGHT

GYMEA LILY, DORYANTHES EXCELSA  
(MIXED GRASSES, NATIVE SHRUBS,)

01

EXISTING TREES TO BE REMOVED  
TREE ID # AS PER ARBORIST REPORT

02

EXISTING TREES TO BE RETAINED & PROTECTED  
TREE ID # AS PER ARBORIST REPORT  
DASH INDICATES TREE PROTECTION ZONE

PLANT SCHEDULE

FORBS & GROUNDCOVERS

Latin Name	Common Name	Spread	Height	Scheduled Size
<i>Carpobrotus glaucescens</i>	Pigface	400	100	150mm
<i>Hardenbergia violacea</i>	Native Sarsaparilla	600	550	150mm
<i>Hibbertia scandens</i>	Golden Guinea Flower	1000	500	150mm
<i>Plectranthus ciliatus</i>	African Spur Flower	600	500	200mm
<i>Viola hederaceae</i>	Native Violet	400	100	150mm
<i>Wahlenbergia gracilis</i>	Sprawling Bluebell	500	200	150mm

GRASSES, SEDGES & RUSHES

Latin Name	Common Name	Spread	Height	Scheduled Size
<i>Dianella caerulea</i> 'Breeze'	Dianella 'Breeze'	600	550	150mm
<i>Liriope</i> 'Just Right'	Just Right	500	500	150mm
<i>Lomandra</i> 'Tanika'	Tanika	600	600	150mm
<i>Neomarica gracilis</i>	Walking Iris	600	500	200mm

FERNS

Latin Name	Common Name	Spread	Height	Scheduled Size
<i>Blechnum nudum</i>	Blechnum	600	500	200mm

SHRUBS

Latin Name	Common Name	Spread	Height	Scheduled Size
<i>Aspidistra elatior</i>	Cast Iron Plant	500	500	150mm
<i>Cordyline glauca</i>	Cordyline Glauca	800	500	200mm
<i>Correa reflexa</i>	Native Fuchsia	900	900	200mm
<i>Doryanthes excelsa</i>	Gynea Lily	2000	2000	15L
<i>Westringia fruticosa</i> 'Mundi'	Westringia Mundi	1500	400	200mm

TREES

Latin Name	Common Name	Spread	Height	Scheduled Size
<i>Elaeocarpus eumundi</i>	Elaeocarpus	2500	9000	75L
<i>Eucalyptus maculata</i>	Spotted Gum	6000	9000	75L
<i>Eucalyptus sideroxylon</i>	Red Ironbark	4500	9000	75L
<i>Melaleuca decora</i>	Paperbark	3000	4000	75L
<i>Syzygium australe</i> 'Pinnacle'	Pinnacle Lilly Pilly	1500	5000	100L

NOTES

- Do not scale from drawings. Verify all dimensions and levels on site.
- All levels shown are in metres Australian Height Datum and dimensions in millimetres unless otherwise specified.
- This drawing should be read in conjunction with the project specification and details. Should a conflict exist advice and direction should be sought from the superintendent.
- The copyright subsisting in these drawings lies with Sprout. They must not be used, copied or reproduced without the prior written consent of Sprout.

drawing references

consultant  
Discipline and company name

issue date  
Date received

drawing title  
Drawing No. or File Name

revision

issue  
G

date  
2/11/21

revision  
REV FOR DA

project

14-16 PATRICIA STREET, MAYS HILL

drawing

PLANTING PLAN

project no.

date

scale

drawn

2109

2/11/21

1:100 @ A1

CW

dwg no.

rev

DA 02

G

PLANTING PLAN

0 5M

LANDSCAPE ARCHITECT

SPROUT  
STUDIO

26D MADDISON STREET  
REDFERN NSW  
T 02 9341 0040  
W sproutstudio.com.au

IN COLLABORATION WITH

MCGREGOR WESTLAKE ARCHITECTURE

CLIENT

LAHC NSW



ELEVATIONS



E02: REAR PRIVATE & COMMUNAL OPEN SPACE  
1:100 @ A1



E01: PATRICIA STREET FRONTAGE  
1:100 @ A1



E03: NORTH EAST SIDE  
1:100 @ A1



MATERIALS



4. BRICK RETAINING WALL OR SCREEN



6. STEEL ROD SCREEN



11. BRICK SEATING BENCH (BRICK INDICATIVE)



12. MOON GATE



MASONRY & CONCRETE STEPS & LANDINGS



4. HONED OR SHOTBLAST INSITU CONCRETE



14. BRICK PAVEMENT



3. CONCRETE UNIT PAVING



17. STABILISED CRUSHED GRAVEL



RECYCLED HARDWOOD MULCH TO GARDEN BEDS



PLANTING

FORBS, GROUNDCOVERS, GRASSES & SHRUBS



*Viola hederaceae*  
NATIVE VIOLET



*Hibbertia scandens*  
SNAKE VINE



*Carpobrotus glaucescens*  
SEA FIG



*Hardenbergia violaceae* 'White Out'  
NATIVE SARSPARILLA



*Liriope muscari* 'Just Right'  
LILY TURF



*Lomandra longifolia* 'Tanika'  
LOMANDRA TANIKA



*Plectranthus ciliatus*  
PLECTRANTHUS



*Poa labillardieri*  
TUSOCK GRASS



*Blechnum gibbum*  
SILVER LADY FERN



*Dodonaea viscosa*  
HOP BUSH



*Westringia fruticosa* 'Mundi'  
COASTAL ROSEMARY



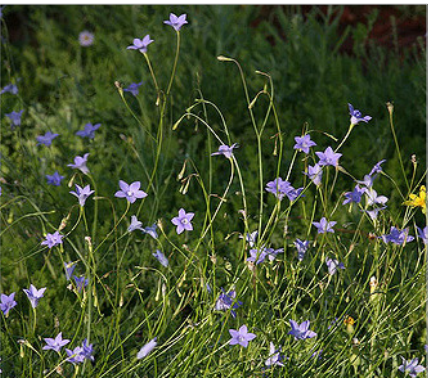
*Kunzea ambigua*  
TICK BUSH



*Dianella caerulea*  
BLUE FLAX-LILY



*Neomarica gracilis*  
WALKING IRIS



*Wahlenbergia gracilis*  
SPRAWLING BLUEBELL



*Callistemon* 'White Anzac'  
BOTTLEBRUSH



*Doryanthes excelsa*  
GYMEA LILY



TREES



*Lagerstroemia indica x Tuscarora*  
CREPE MYRTLE



FEATURE



*Melaleuca decora*  
FEATHER HONEY-MYRTLE PAPERBARK



FEATURE



*Elaeocarpus eumundi*  
EUMUNDI QUANDONG



FEATURE



*Corymbia maculata*  
SPOTTED GUM



FEATURE



*Eucalyptus sideroxylon 'Rosea'*  
RED FLOWERING IRONBARK



FEATURE



*Syzigium australe 'Pinnacle'*  
PINNACLE



FEATURE



*Tristaniopsis laurina 'Luscious'*  
WATERGUM



FEATURE